



TR160M Series Application Note V10

160W AC-DC Medical Switch Adapter TR160M Series APPLICATION NOTE



Approved By:

Department	Approved By	Checked By	Written By
Research and Development Department	Enoch	Calvin	Jeter
		Ovid	
Quality Assurance Department	Ryan	Benny	



TR160M Series

Application Note V10

Content

1. INTRODUCTION	3
2. ELECTRICAL BLOCK DIAGRAM	3
3. MAIN FEATURES AND FUNCTIONS	4
3.1 <i>Operating Temperature Range</i>	4
3.2 <i>Output Protection (Over Current Protection)</i>	4
4. APPLICATIONS	4
4.1 <i>Test Set-Up</i>	4
4.2 <i>Output Ripple and Noise Measurement</i>	4
5. PACKING INFORMATION	5



TR160M Series

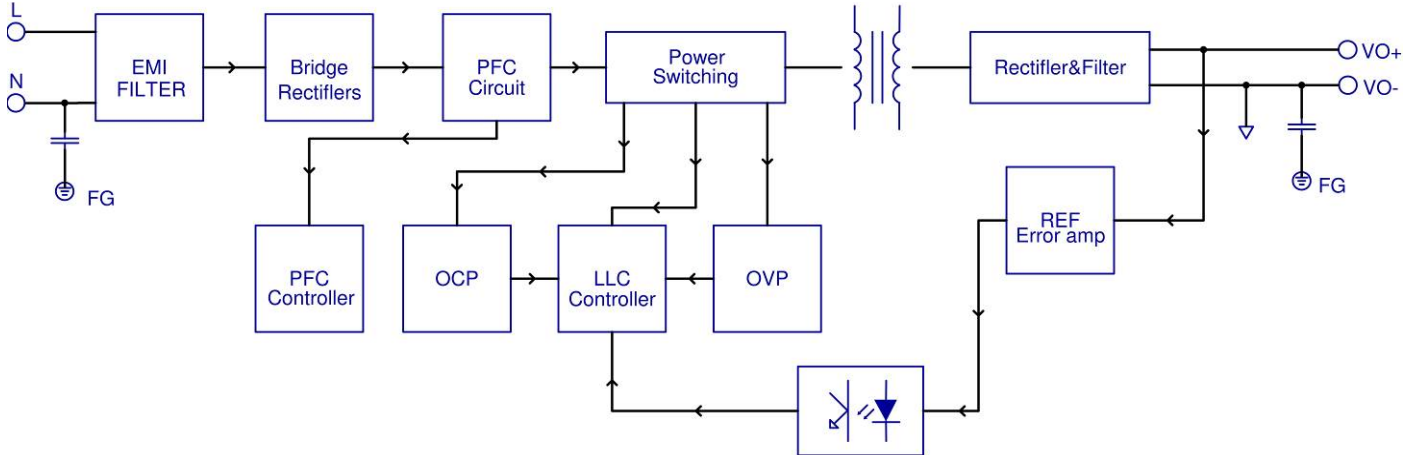
Application Note V10

1. Introduction

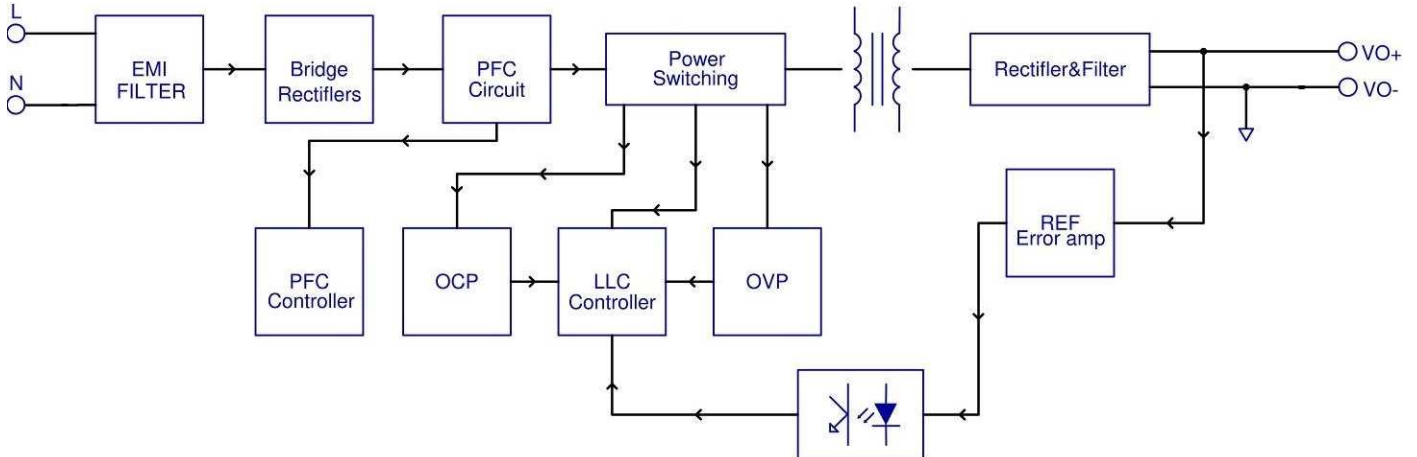
This application note describes the features and functions of Cincon's TR160MA/B series of open frame, switching AC-DC power module. These are highly efficient, reliable, compact, high power density, single output AC/DC power modules. The module is fully protected against short circuit and over-voltage conditions. Cincon's world class automated manufacturing methods, together with an extensive testing and qualification program, ensure that the TR160MA/B series power module is extremely reliable.

2. Electrical Block Diagram

TR160MA Series



TR160MB Series





TR160M Series

Application Note V10

3. Main Features and Functions

3.1 Operating Temperature Range

The highly efficient design of Cincon's TR160MA/B series power modules has resulted in their ability to operate within ambient temperature environments from -20°C to 70°C. Due consideration must be given to the de-rating curves when ascertaining the maximum power that can be drawn from the module. The maximum power which can be drawn is influenced by a number of factors, such as

- Input voltage range
- Permissible Output load (per derating curve)
- Effective heat sinks

3.2 Output Protection (Over Current Protection)

The power modules provide full continuous short-circuit protection. The unit will auto recover once the short circuit is removed. To provide protection in a fault condition, the unit is equipped with internal over-current protection. The unit will operate normally once the fault condition is removed. The power module will go to hiccup mode if the output current is set from 110% to 130% of rated current.

4. Applications

4.1 Test Set-Up

The basic test set-up to measure parameters such as efficiency and load regulation is shown in Figure 1. When testing the Cincon's TR160MA/B series under any transient conditions, please ensure that the transient response of the source is sufficient to power the equipment under test. We can calculate the

- Efficiency
- Load regulation and line regulation.

The value of efficiency is defined as:

$$\eta = \frac{V_o \times I_o}{P_{in}} \times 100\%$$

Where:

- Vo is output voltage
- Io is output current
- Pin is input power

The value of load regulation is defined as:

$$Load\ reg. = \frac{V_{FL} - V_{NL}}{V_{NL}} \times 100\%$$

Where:

- V_{FL} is the output voltage at full load
- V_{NL} is the output voltage at 10% load

The value of line regulation is defined as:

$$Line\ reg. = \frac{V_{HL} - V_{LL}}{V_{LL}} \times 100\%$$

Where:

V_{HL} is the output voltage of maximum input voltage at full load.

V_{LL} is the output voltage of minimum input voltage at full load.

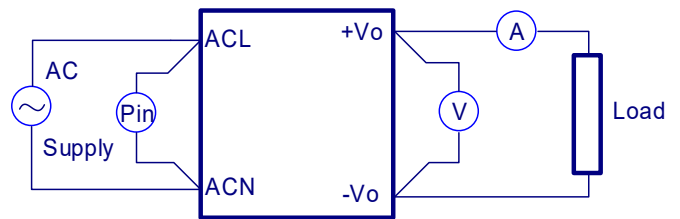


Figure 1. TR160MA/B Series Test Setup

4.2 Output Ripple and Noise Measurement

The test set-up for noise and ripple measurements is shown in Figure 2. Measured method:

Add a C2=0.1uF ceramic capacitor and a C1=10uF electrolytic capacitor to output at 20 MHz Band Width.

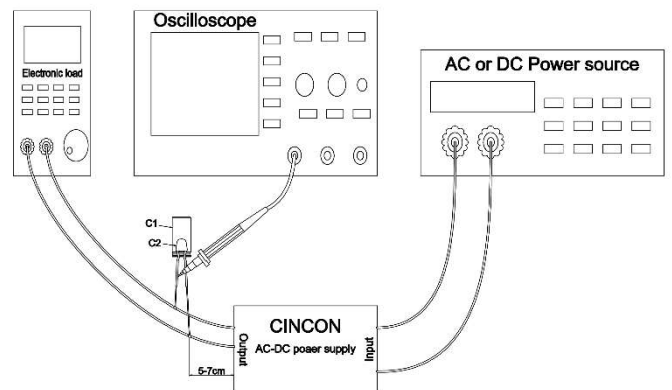


Figure 2. Output Voltage Ripple and Noise Measurement Set up

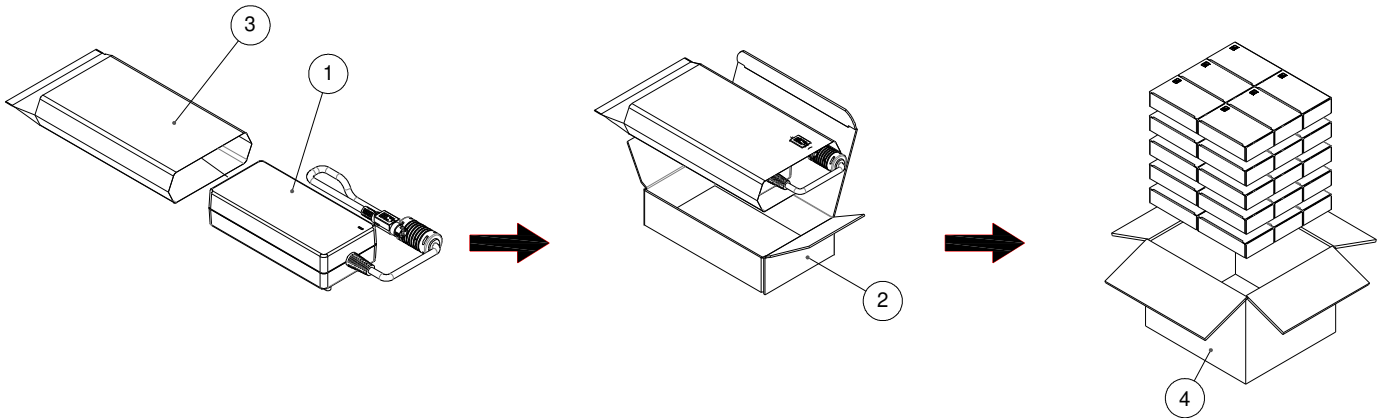


TR160M Series

Application Note V10

5. Packing Information

The packing information for TR160MA/BXXX series is showing as follows:



ITEM	PART NO.	NAME	OUTSIDE DIM	PCS
1		TR160MXXXX Prouduct	150x70x39mm	30
2	G64205321	Inner Box	185x110x50mm	30
3	G64D15057	Plasitc Bag	155x245x0.08mm	30
4	G64114345	NO.163 Cardboard Box	385x345x280mm	1

Each Box Packaging 30 PCS Products

Net weight Ref. 17.1 Kg

Gross weight Ref. 18.5 Kg

Headquarters:

14F, No.306, Sec.4, Hsin Yi Rd.

Taipei, Taiwan

Tel: 886-2-27086210

Fax: 886-2-27029852

E-mail:

support@cincon.com.tw

Web Site:

<http://www.cincon.com>

CINCON ELECTRONICS CO., LTD.

Factory:

No. 8-1, Fu Kung Rd.

Fu Hsing Industrial Park

Fu Hsing Hsiang,

Chang Hua Hsien, Taiwan

Tel: 886-4-7690261

Fax: 886-4-7698031

Cincon North America:

1655 Mesa Verde Ave. Ste 180

Ventura, CA 93003

Tel: 805-639-3350

Fax: 805-639-4101

E-mail: info@cincon.com